

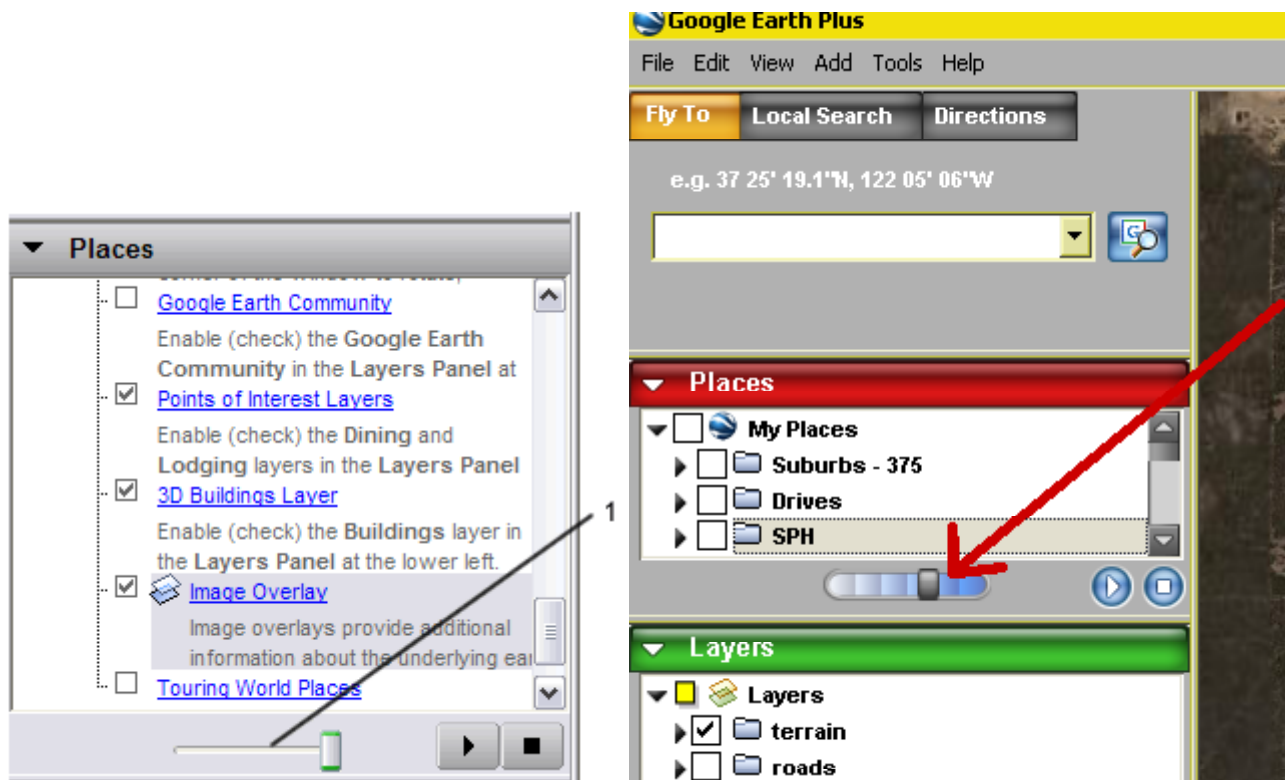
# Help for using Google Earth & Overlays

## Opening Overlays on a Web Server

You can open overlays posted to a web server simply by clicking on the link that references the overlay image. When you do this, a dialog box prompts you to select the correct application to open the attachment. By default, Google Earth should be selected. Click the appropriate button to confirm the selection. The image overlay appears in the 3D viewer and the item is displayed in the *Temporary Places* folder in the *Places* pane. You can save the overlay as described below.

- Save the overlay to your computer by right-clicking (CTRL click on the Mac) the item and selecting *Save As...* from the pop-up menu.
- Use the *File* dialog box to save the placemark or folder to your computer. Enter the name for the new file, and click *Save* in the dialog box. The placemark or the folder is saved to that location with an extension of *.kmz*.
- You can now open it in the future by double-clicking the saved file.

**Transparency Adjustment** - You can adjust the transparency of an overlay from completely transparent to fully opaque whenever it is selected in the viewer. By adjusting the transparency of the overlay image, you can see how the overlay image corresponds to the 3D viewer imagery beneath.



1. Overview slider for selected overlay

**Note** - You can also adjust the transparency of a selected overlay if your mouse has a scroll wheel. Click the slider (see above). Scroll down to make the overlay more opaque. Scroll up to make the overlay more transparent,

**Need more help: Play around, you can't break it. If you muck it up, then simply download the overlay again.**

## Help Index:

[http://earth.google.com/userguide/v4/ug\\_toc.html](http://earth.google.com/userguide/v4/ug_toc.html)

## Touring places in the overlay

[http://earth.google.com/userguide/v4/ug\\_touringplaces.html](http://earth.google.com/userguide/v4/ug_touringplaces.html)